

Customer :

customer

Customer part :

customer part

Comment :

Comment

S1=0.04

S2=0.29

Tmax=510

Tp S2=549.0

PI=0.12

HI=27

Sample =10472.4

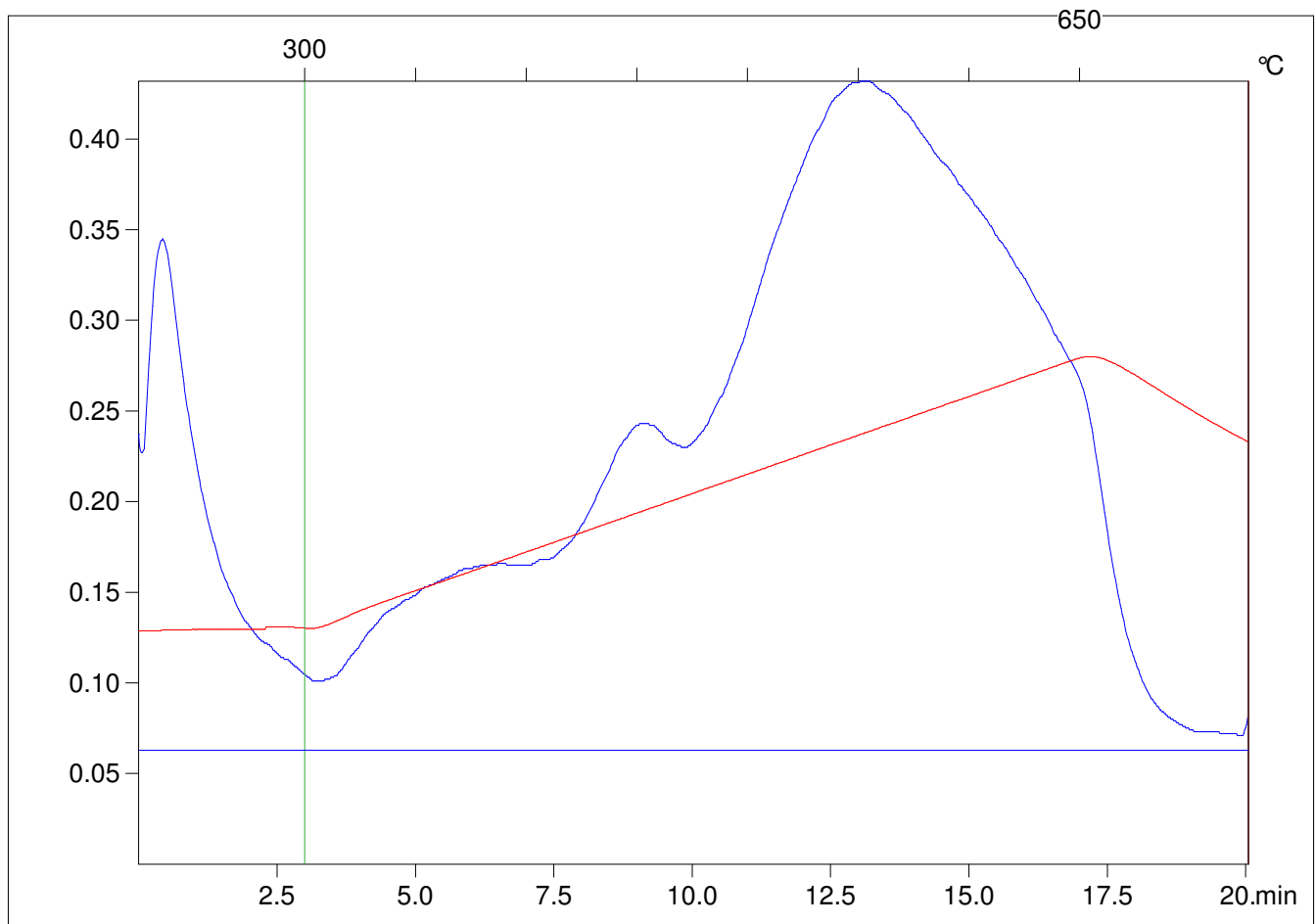
Method =Bulk Rock

Cycle=Basic

KFID(10\*9)=1167

Qty =70.7

TOC=1.07



C:\VINC\PK141021\PK010.R00 : FID pyrolysis graphic

State

Pyro Status

Oxi Status